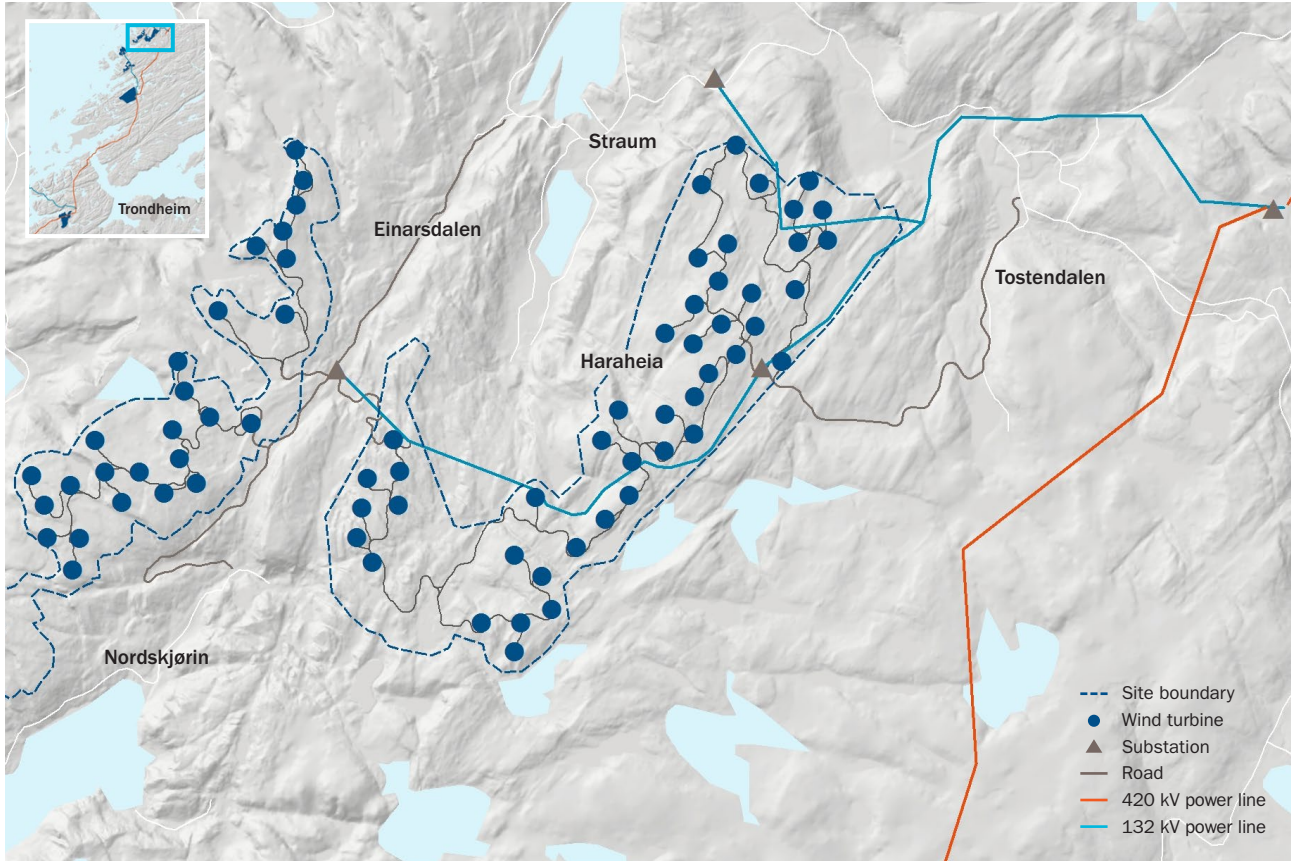




# Roan wind farm



Roan wind farm is the first of the wind farms in the Fosen Vind portfolio to be realised. Construction work on the access road commences in April 2016.

The wind farm will be located on a mountain plateau east of the municipality centre, comprising two areas separated by the valley Einarsdalen.

The wind farm is located in the municipality of Roan in Sør-Trøndelag county.

## ROAN WIND FARM – FOSEN VIND DA

Production (GWh)	900
Capacity (MW)	255.6
Construction start	2016
Turbine delivery	2018
Commissioning	2018
Wind turbines	71
Roads, access+internal (km)	70
Municipality	Roan